

## CONFERENCE ACCOMMODATIONS

### HOTELS

#### Handpicked hotel

Address : [Sang-do Ro 120, Dong-jak Gu, Seoul \(Sang-do 4dong 353-2\)](#)

About 8min for taxi from the venue. (2km)

Email : [contact@handpicked.kr](mailto:contact@handpicked.kr)

Website : <http://handpicked.kr/contact>

Tel. +82222295499

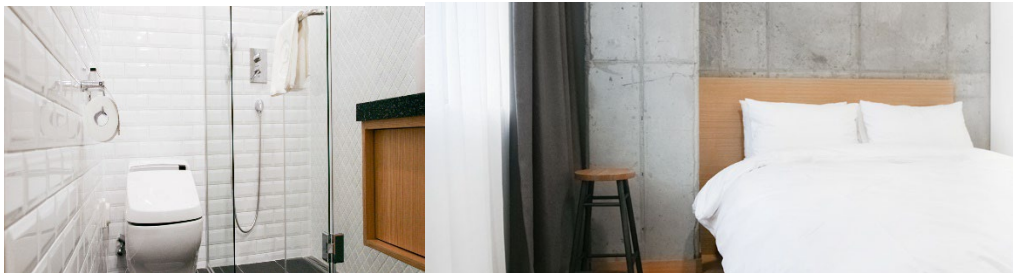
Studio basic Double (KRW 76.000 ) is the most reasonable space with a compact room and a bathroom. There are one queen size bed, a desk, a cloth rack and a full-length mirror in a room designed to utilize small space more efficiently. The room includes the same best quality beddings, mattresses, and amenities that are in the Suites.

Check-in Time 15 : 00 Check-out Time 12 : 00

Room Details \* Bedroom 1, Shower booth 1, Bathroom 1

Bed Type Queen

Room Size 19.5 m<sup>2</sup>



#### GLAD Yeouido

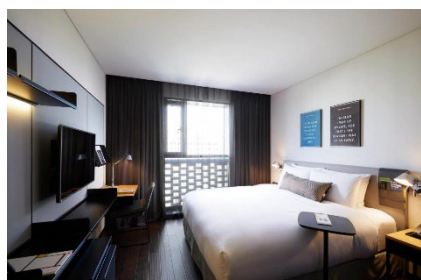
Address : [16, Uisadang-daero, Yeongdeungpo-gu, Seoul](#)(Exit 4 of the National Assembly Station)

About 12min for taxi from the venue. (6km)

Email : [info@glad-hotels.com](mailto:info@glad-hotels.com) / [rsvn@glad-hotels.com](mailto:rsvn@glad-hotels.com)

Website : <https://www.glad-hotels.com/yeouido/index.do?locale=en>

Room details: Standard double room 120.000 KRW 10% tax per night (excl. breakfast)



### Seoul Dragon City Novotel

Address: [95 Cheongpa-ro 20-gil, Yongsan-Gu, Seoul](#)

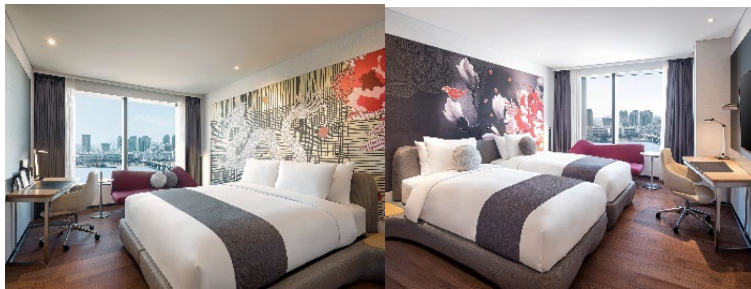
About 15 minutes for taxi from the venue (5km).

Email: [welcome@seouldragoncity.com](mailto:welcome@seouldragoncity.com)

Website: <https://sdc-club.com/en/hotel/hotel-novotel.php>

Reservation : Please use the [registration form](#)

*Superior room (twin or double): KRW 125.000 + 10% tax per night (excl. breakfast)*



*Double room Novotel*

*Twin room Novotel*

### Seoul Dragon City Ibis Styles

Address: [95, Cheongpa-ro 20-gil, Yongsan-gu, Seoul](#)

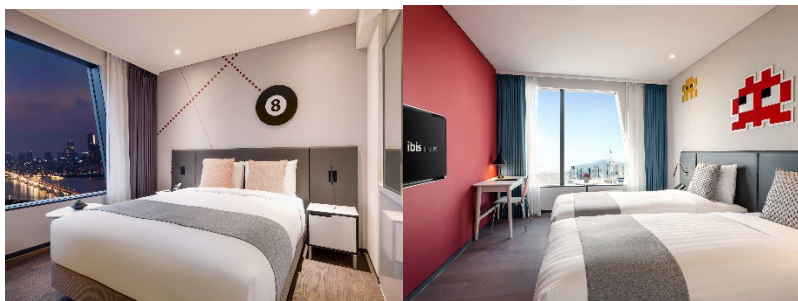
About 15 minutes for taxi from the venue (5km).

Email: [welcome@seouldragoncity.com](mailto:welcome@seouldragoncity.com)

Website: <https://www.seouldragoncity.com/accommodations/ibis-styles-rooms/>

Reservation : It's cheaper to find special promotions on Agoda(<https://www.agoda.com/>) or Hotels.com(<https://www.hotels.com/>) or Expedia(<https://www.expedia.com/>) than hotel's official website

*Superior room (twin or double): KRW 125.000 + 10% tax per night (excl. breakfast)*



*Double room Ibis Styles*

*Twin room Ibis Styles*

The room charges are quoted in Korean Won. Please use a currency converter to check the fee in your local currency, e.g. <https://www1.oanda.com/currency/converter/>

## **GUEST HOUSE**

Guest house Chung-Ang University

Address: [06974, Blue Mir Hall 84, Heukseok-ro, Dongjak-gu, Seoul, Republic of Korea](#)

Tel : +82-2-820-6672

Email: Please contact Dr. Myung-Ju Kang (ABRN conference coordinator RCCZ) to make a reservation at [k009001@naver.com](mailto:k009001@naver.com).

*Standard Single (excl. breakfast):* KRW 55.000 per night

Linens are provided. Breakfast is not included, but the guesthouse's cafeteria serves three meals a day at an additional fee.



*Standard double (excl. breakfast):* KRW 77.000 per night

About a 5 minutes' walk from the venue.

**\*Please note** that only a limited number of rooms in the guest house will be available for conference participants.